



Up-to-date Practice Test with Latest Questions and Answers covering latest syllabus and topics of the exam. Makes you ready to face actual exam.



PEGAPCRSA80V1_2019 Practice Questions
PEGAPCRSA80V1_2019 Practice Test
PEGAPCRSA80V1_2019 Practice Exam
PEGAPCRSA80V1_2019 Exam Questions
PEGAPCRSA80V1_2019 Study Guide



killexams.com

Pegasystems

PEGAPCRSA80V1_2019

Pega Certified Robotics System Architect 80V1 2019

ORDER FULL VERSION

https://killexams.com/pass4sure/exam-detail/PEGAPCRSA80V1_2019



Question: 50

You have extracted a proxy for a data set and are using it to pass the data into a procedure automation input parameter. In the procedure automation, the data link from the input parameter is not connecting to the stringValue on a stringUtils method.

What two troubleshooting steps do you perform to correct the issue? (Choose two.)

- A. Confirm the proxy data in a messageDialog.**
- B. Confirm the stringUtils method works.**
- C. Confirm the data type on the procedure automation input parameter.**
- D. Confirm the proxy's data type matches with the stringUtils method.**

Answer: AC

Question: 51

There are two basic types of automations: events and procedures. Which three statements describe a procedure automation? (Choose three.)

- A. It performs business logic and may interact with applications.**
- B. It is triggered by a user or application action.**
- C. It may contain more than one starting block.**
- D. It contains an entry point and should contain at least one exit point.**
- E. It should return a string value for messaging.**

Answer: CDE

Question: 52

You are automating the login process for a web application. There are three possible scenarios that may occur: (1) You may successfully login, (2) you may not be successful logging in, or (3) you may log in but go to the change password screen.

Which control from the Toolbox do you use to determine which page you were on after performing the login function?

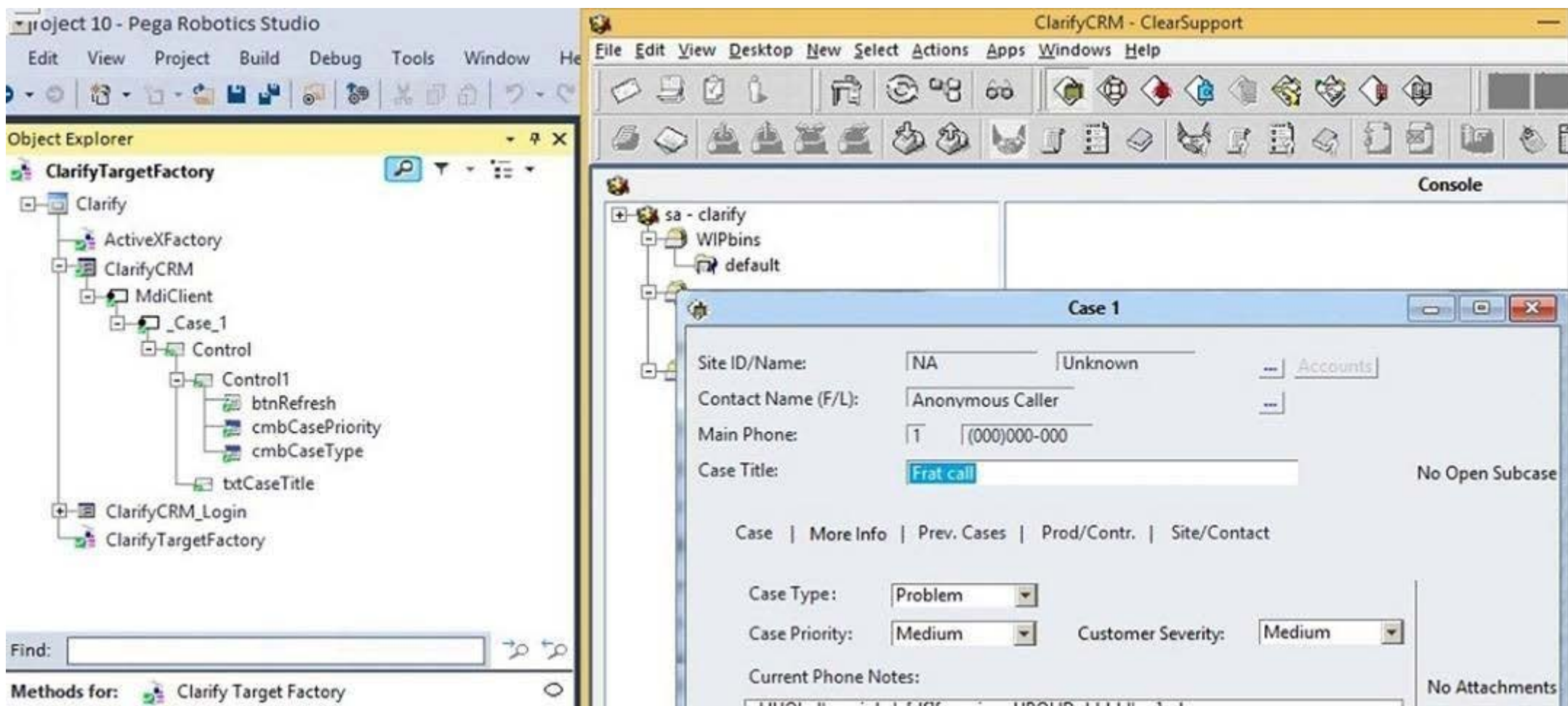
- A. WaitAll**
- B. Switch**
- C. WaitAny**
- D. Signal**

Answer: C

Question: 53

During application discovery of a Clarify application, you determine that the user accesses more than one customer case concurrently within the application, which creates multiple windows of the same type. This requires you to enable the UseKeys property on an application's object.

Based on the image that shows the application and the matched controls in the Object Explorer, which control's UseKeys property must be set to True?



- A. ClarifyCRM
- B. MdiClient
- C. _Case_1
- D. Control

Answer: A

Reference: <https://community.pega.com/knowledgebase/articles/how-do-i-use-keys-navigate-between-multiple-instances-object>

Question: 54

HOTSPOT

Pega Robot Studio provides five rules on how to differentiate between cloneable application objects when using key assignments in automations. The first rule states that an event creates the instance to set the context of a cloneable object. The remaining four rules state the requirements for a key assignment.

In the Answer Area, determine if each rule description requires a key assignment.

Hot Area:

Answer Area

Rule Description

An event from Child Context to Parent Context

An event from Parent Context to Child Context

Logic within the same context

An event from No Context to a Context

Key Assignment Required?

	▼
Requires a key assignment	
Does not require a key assignment	

	▼
Requires a key assignment	
Does not require a key assignment	

	▼
Requires a key assignment	
Does not require a key assignment	

	▼
Requires a key assignment	
Does not require a key assignment	

Answer:

Answer Area

Rule Description

An event from Child Context to Parent Context

An event from Parent Context to Child Context

Logic within the same context

An event from No Context to a Context

Key Assignment Required?

	▼
Requires a key assignment	
Does not require a key assignment	

	▼
Requires a key assignment	
Does not require a key assignment	

	▼
Requires a key assignment	
Does not require a key assignment	

	▼
Requires a key assignment	
Does not require a key assignment	

Question: 55

You need to configure an application to store encrypted login credentials in the user's local profile. You also need to automate the login using these encrypted credentials.

How do you fulfill this requirement without creating an automation?

- A. Create a robot activity that performs the application login.**
- B. Set the necessary adapter credential properties prior to interrogating the target controls.**
- C. Interrogate the target controls and set the necessary adapter credential properties.**
- D. Interrogate the target controls and create a script to perform the login functionality.**

Answer: A

Reference: <https://community.pega.com/knowledgebase/articles/pega-robotic-automation/encryption-and-assisted-sign-component>

Question: 56

Pega Robotic Coding Standards suggest organization of project components. You have added the _GC_CRM project item to the CRMPj. Which three components are recommended to be placed in the _GC_CRM project item? (Choose three.)

- A. ForLoop**
- B. Switch**
- C. stringUtils**
- D. messageDialog**
- E. dateTimeUtils**

Answer: CDE

Question: 57

Which of the following controls cannot be added to the Windows form?

- A. ComboBox**
- B. ProgressBar**
- C. Pointer**
- D. PictureBox**

Answer: C

Question: 58

You add a MessageDialog component to an automation. Based on the following image, which option shows the configuration settings that generates the message dialog?



A.

A.

Appearance	
Buttons	YesNoCancel
Caption	
DefaultButton	Button2
Icon	Question
Behavior	
TopMost	True
Data	
Message	
Design	
(Name)	messageDialog2

B.

Appearance	
Buttons	YesNoCancel
Caption	
DefaultButton	Button2
Icon	Question
Behavior	
TopMost	True
Data	
Message	
Design	
(Name)	messageDialog2

C.

Appearance	
Buttons	YesNoCancel
Caption	
DefaultButton	Button2
Icon	None
Behavior	
TopMost	True
Data	
Message	
Design	
(Name)	messageDialog2

D.



Answer: D

Question: 59

You are designing an automation that adds new customers to an online insurance web site. If a customer exists, a pop-up window is displayed with an error message, which closes automatically after 35 seconds.

While debugging the automation, you notice that you are receiving a control not created exception message in the Add Customer procedure after a page navigation occurs. How do you resolve the exception?

- A. Add a missing created event in the Add Customer procedure.
- B. Ensure the waitForCreate timeout is longer than 35 seconds in the Add Customer procedure.
- C. Ensure the isCreated timeout is longer than 35 seconds in the Add Customer procedure.
- D. Add a missing waitForEvent.Exists method in the Add Customer procedure.

Answer: D

Question: 60

Select two statements that correctly describe adapters. (Choose two.)

- A. Adapters have accessible properties, methods, and events that launch, monitor, and expose enterprise applications for automation.
- B. An adapter allows users to integrate with an application built on a specific platform.
- C. An adapter orchestrates the deployment of a robotic solution and monitors the robots of the robot worker pool.
- D. An adapter integrates with Windows applications by using a self-hosted REST service through application JavaScript.

Answer: AB

Reference: <https://community1.pega.com/community/product-support/question/adapter-pega-robotics>

Killexams.com is a leading online platform specializing in high-quality certification exam preparation. Offering a robust suite of tools, including Exam Questions, practice tests, and advanced test engines, Killexams.com empowers candidates to excel in their certification exams. Discover the key features that make Killexams.com the go-to choice for exam success.



Practice Exam Questions Based on Current Exam Objectives

Killexams.com provides practice exam questions aligned with the latest official exam objectives and latest syllabus. Our content is reviewed and updated regularly to reflect recent changes announced by certification vendors. By studying these practice questions, candidates will cover the structure, difficulty level, and topics of the actual exam, helping them prepare more effectively and efficiently.

Comprehensive Practice Exams (PDF Format)

Killexams.com offers multiple-choice questions (MCQs) in easy-to-read PDF format, covering all major domains of the exam. Each PDF contains a structured collection of practice questions and verified answers designed to support focused study. These MCQs help candidates reinforce key concepts, identify knowledge gaps, and improve exam readiness through consistent practice.

Realistic Practice Tests (Online Test Engine & Desktop Test Engine)

To support hands-on preparation, Killexams.com provides practice tests through both an Online Test Engine and a Desktop Test Engine. These tools are designed to simulate a real exam environment, allowing candidates to practice under exam-like conditions, with latest syllabus and topics of the exam. Performance tracking, test history, and result analysis help users evaluate their progress and focus on areas that need improvement.

Risk-Free Purchase Policy

Killexams.com follows a transparent and customer-friendly purchase policy. If users are not satisfied with the study materials, they may request assistance or a refund in accordance with our published terms and conditions. This policy reflects our commitment to customer satisfaction, fairness, and confidence in our preparation resources.

Regularly Updated Content

Our practice question bank is reviewed and updated on an ongoing basis to stay aligned with the latest exam outlines and vendor updates. This ensures candidates are studying up-to-date, relevant material, and preparing with content that reflects current exam expectations, helping them stay confident and well-prepared.